



Bench

seating

2023-JULY

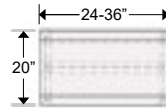
Bench TRS

Straight line bench seating. One seat cushion.



CODE	PRICE	WIDTH (in/mm)	DEPTH (in/mm)	HEIGHT (in/mm)	VOLUME (ft3/m3)	WEIGHT (lbs/kg)
------	-------	------------------	------------------	-------------------	--------------------	--------------------

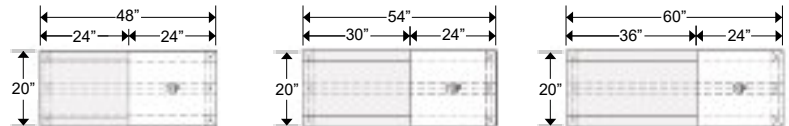
TRS-2024-C24-19	950	24/610	20/508	19/483	6.0/0.17	30/14
TRS-2030-C30-19	965	30/762	20/508	19/483	6.2/0.18	33/15
TRS-2036-C36-19	980	36/914	20/508	19/483	6.4/0.18	36/16



Straight line bench seating. One seat cushion, one end table top.



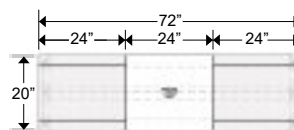
TRS-2048-C24T24-19	1120	48/1219	20/508	19/483	10.0/0.28	40/18
TRS-2054-C30T24-19	1180	54/1372	20/508	19/483	11.0/0.31	44/20
TRS-2060-C36T24-19	1240	60/1524	20/508	19/483	12.0/0.34	46/21



Straight line bench seating. Two seat cushions, one center table top.



TRS-2072-C24T24C24-19	1650	72/1829	20/508	19/483	13.0/0.37	55/25
-----------------------	------	---------	--------	--------	-----------	-------



Refer to Links Fabric cards for available fabric selection - Vinyl is available upon request. Contact Customer Service for options and pricing. Laminate available in any of our Top finishes.

Standard or custom ELE-PORTs can be added to laminate top surface. Contact customer service for pricing and availability.

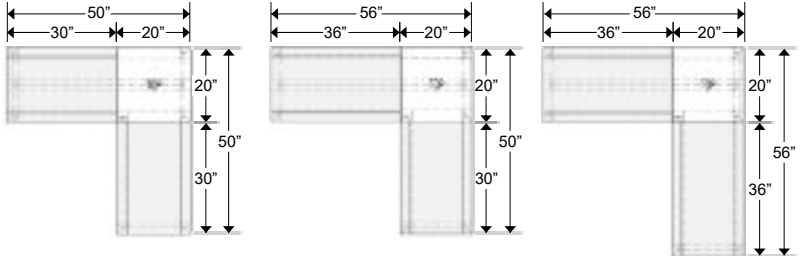
Bench TRSL

L shape bench seating. Left. Two seat cushions, one center table top.

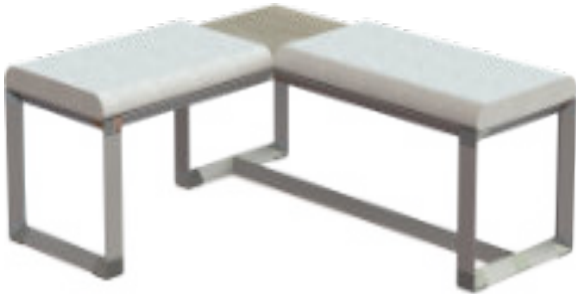


CODE	PRICE	WIDTH (in/mm)	DEPTH (in/mm)	HEIGHT (in/mm)	VOLUME (ft3/m3)	WEIGHT (lbs/kg)
------	-------	---------------	---------------	----------------	-----------------	-----------------

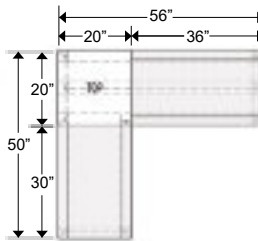
TRSL-5050-19-C	2000	50/1270	50/1270	19/483	14.0/0.40	73/33
TRSL-5650-19-C	2030	56/1422	50/1270	19/483	15.0/0.42	75/34
TRSL-5656-19-C	2060	56/1422	56/1422	19/483	16.0/0.45	77/35



L Shape bench seating. Right. Two seat cushions, one center table top.



TRSL-5056-19-C	2030	50/1270	56/1422	19/483	15.0/0.42	75/34
----------------	------	---------	---------	--------	-----------	-------



Power/Data Center

Metal Finish Electrical Port.



2 voice/data ports/housing
 (jacks not included)

ELE-PORT-200	722	Please specify position when ordering
--------------	-----	---------------------------------------

Add (-SL) for Silver finish or (-BK) for Black finish

Power Center. Plastic



1 Open Data/2 Power/1 Open Data

ELE-PORT-400	433	Please specify position when ordering
--------------	-----	---------------------------------------

Add (-BK) for Black finish or (-WH) for White finish

Refer to Links Fabric cards for available fabric selection - Vinyl is available upon request. Contact Customer Service for options and pricing.

Laminate available in any of our Top finishes.

Standard or custom ELE-PORTs can be added to laminate top surface. Contact customer service for further pricing and availability.



LINKS' Creative Solutions . . . The Industry Leader!



While every effort is made to ensure the accuracy of information contained in this price list at the time of publication, we cannot accept responsibility for inaccuracies resulting from printing errors or omissions. We reserve the right to make product improvements and price changes without notice.

© Copyright 2023 Links Contract Furniture Inc.. All Rights Reserved.

Head Office/Showroom:	141 Cidermill Ave, Unit #1	Concord, Ontario	Canada	L4K 4G5
Local & International:	P: 416.745.8910			
Toll Free - North America:	P: 855-50-LINKS (855.505.4657)			
Email:	info@linkscontract.com			
Website:	linkscontract.com			