

ELE-PORT

Power/Data Center

The ELE-PORT is a compact workspace accessory that provides convenient power and data distribution.

Item Codes:

ELE-PORT-100 (Black) and ELE-PORT-200 (Silver)

Standard Features:

- 2 simplexes
- 2 voice/data ports/housing (jacks not included)
- 15 amp cord
- UL listed
- Voice/data adapter kits are standard, accept couplers and jacks.
- Worksurface cutouts included in standard locations.

ELE-PORT Voice/DATA Adapter Kit

- One voice/data kit is supplied with each ELE-PORT.
- Adapters made to accept most couplers and jacks.

ELE-PORT Specifications:

- ELE-PORT may be ordered on all worksurfaces.
- 10 foot black cord included.
- ELE-PORTs are available in standard worksurface locations (shown below)
- ELE-PORTs may be placed in custom locations, a drawing is required indicating exact vertical and horizontal locations for the **center of the cutout**.

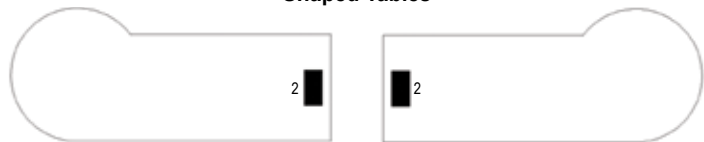


Returns / Connecting Tops
Standard POS2

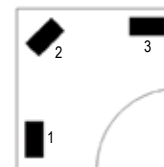


(on most worksurfaces)

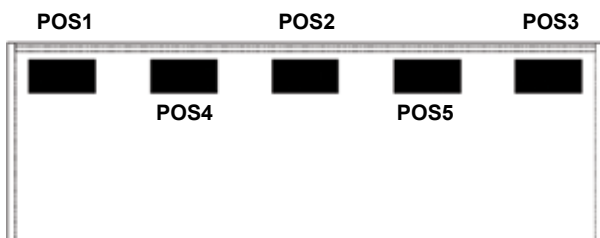
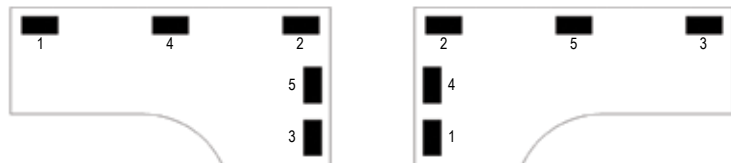
Shaped Tables



Corner Units



Extended Corner Units



Cut-out placed on user side of back panel.

ELE-PORT Position Codes

- POS1** Left/Left User Side
- POS2** Center/Center User Side
- POS3** Right/Right User Side
- POS4** Left/Center User Side
- POS5** Right/Center User Side



See power distribution components on page 201 for pricing.